

## EAST L. A.

JOE GALLARDO  
ARRANGEMENT: JOE GALLARDO

♩ = 156

4

(A)

6m<sup>2</sup>5 C7b9 Fm Bb7

7

Bbm Eb7 Abm Db7 Gm<sup>2</sup>5 C7

10

Fm Bb7 Bbm Eb7 Abm Db7 Gm<sup>2</sup>5 C7

14

(B)

18

(C)

B7 Eb7 Ab7 Db9sus Gb7 C7alt F7sus F7b9

22

(D)

B7 Eb7 Ab7 Db7

26

(E) IMPRO

30

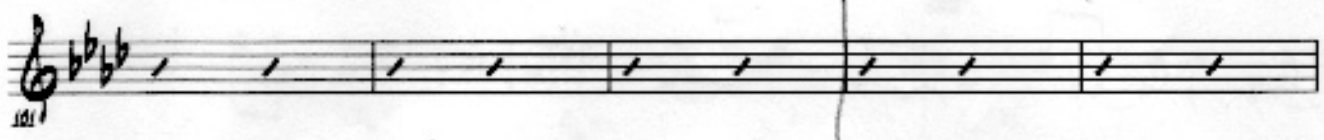
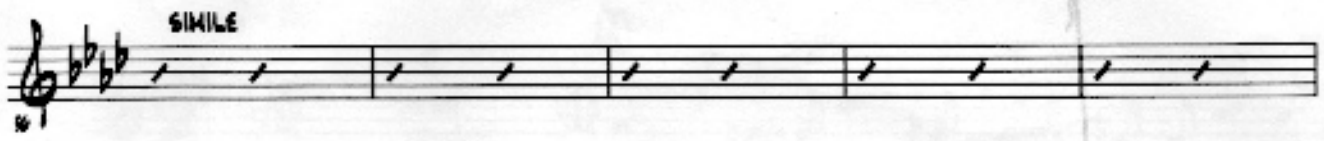
(F) IMPRO

A handwritten musical score for the piece "East L.A." in 4/4 time, featuring a key signature of two flats (B-flat and E-flat). The score consists of 12 staves of music. The notation includes eighth and sixteenth notes, rests, and various musical symbols such as repeat signs and first/second endings. A circled letter 'G' is placed above the second staff with the word "Impro" written next to it. A circled letter 'H' is placed above the fourth staff with the instruction "REPEAT TO LETTER E" written above it. A box containing the circled letter 'H' and the words "ON CUE" is placed above the fourth staff. A circled letter 'I' is placed below the fifth staff, a circled letter 'J' below the sixth staff, a circled letter 'K' below the eighth staff, and a circled letter 'L' below the ninth staff. The score concludes with a double bar line and a final chord.

$\text{♩} = \text{d}$  (DOUBLE TIME)

EAST L. A.

3



SEQUENCE TO "TO LOVE IS TO LOVE YOU"

[E]

||: G<sup>-7b5</sup> C<sup>7</sup> | F<sup>-7</sup> B<sub>b</sub><sup>7</sup> || | B<sup>-7</sup> E<sub>b</sub><sup>7</sup> | A<sub>b</sub><sup>7</sup> D<sub>b</sub><sup>7</sup> |  
 | G<sup>-7b5</sup> C<sup>7</sup> | F<sup>-7</sup> B<sub>b</sub><sup>7</sup> | G<sup>7b9</sup> C<sup>7</sup> | F<sup>-7</sup> (B<sub>b</sub><sup>7</sup>) :||

[F]

|| B<sub>b</sub><sup>-7</sup> E<sub>b</sub><sup>7</sup> | A<sub>b</sub><sup>Δ</sup> D<sub>b</sub><sup>9sus</sup> | G<sub>b</sub><sup>Δ</sup> C<sup>7alt</sup> | F<sup>7sus</sup> F<sup>7b9</sup> |  
 | B<sub>b</sub><sup>-7</sup> C<sup>alt</sup> | F<sup>-7</sup> A<sub>b</sub>/E<sub>b</sub> | D<sup>-7b5</sup> G<sup>7+</sup> | C<sup>7sus</sup> C<sup>7b9</sup> ||

[G]

|| G<sup>-7b5</sup> | F<sup>-7</sup> B<sub>b</sub><sup>7</sup> | B<sub>b</sub><sup>-7</sup> E<sub>b</sub><sup>7</sup> | A<sub>b</sub><sup>-7</sup> D<sub>b</sub><sup>7</sup> |  
 | G<sup>-7b5</sup> C<sup>7</sup> | F<sup>-7</sup> B<sub>b</sub><sup>7</sup> | G<sup>7b9</sup> C<sup>7#9</sup> | F<sup>-7</sup> B<sub>b</sub><sup>7</sup> ||