

Bird Count

GUITAR

composed & arranged
by Maria Schneider

RAUCOUS SWING $\text{♩} = 110$

8 9 F7

f

Bb7 F7

C7 Bb7 F7

21 (F7)

Bb7 F7

C7 Bb7 F7

33 (F7)

Bb7 F7

C7 Bb7 F7

45 (F7)

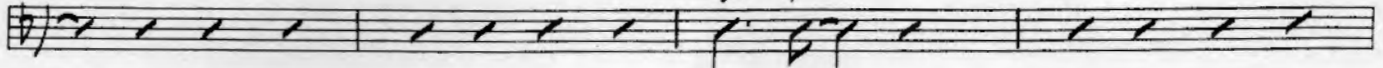
Bb7 F7

C7 Bb7 F7

57 F13(#9) E13(#9) F13(#9) E13(#9) F13(#9) E13(#9) F13(#9) E13(#9) F13(#9) E13(#9) F13(#9) E13(#9) F13(#9) Bb13

(TR. SOLO)

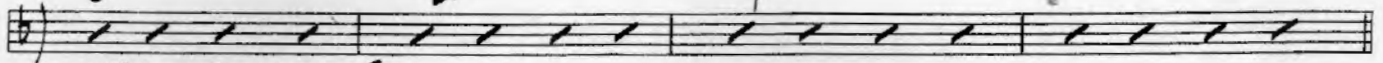
G^b7 F7



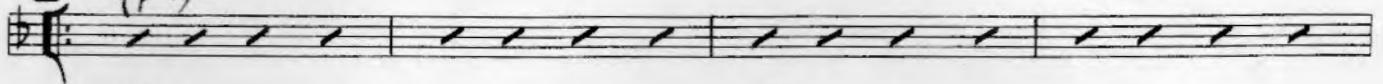
C7

B^b7

F7

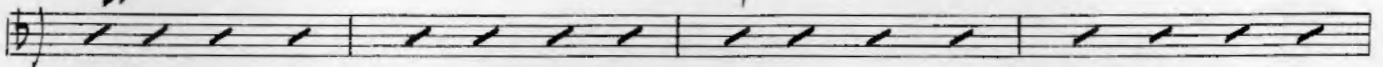


69 OPEN: LAST X ON CUE
(F7)



B^b7

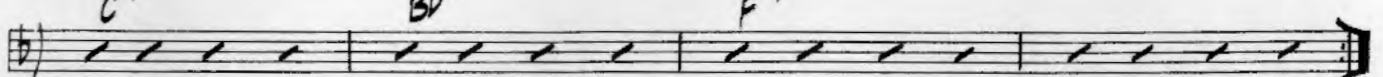
F7



C7

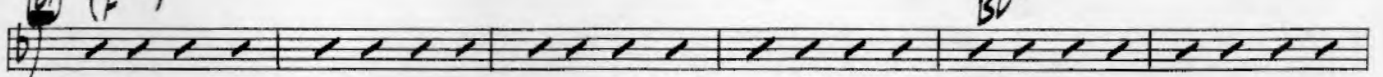
B^b7

F7



71 (F7)

B^b7

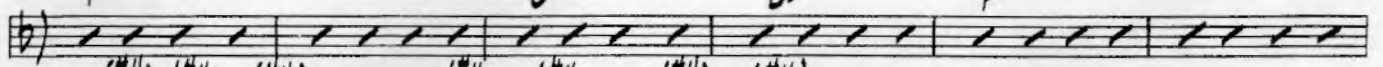


F7

C7

B^b7

F7

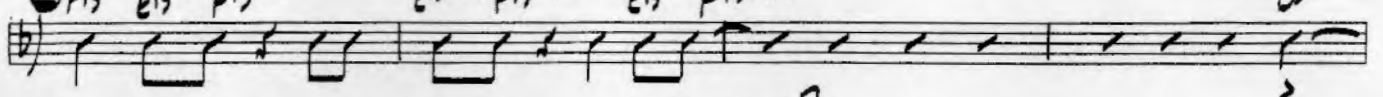


93 F13(#9) E13(#9) F13(#9)

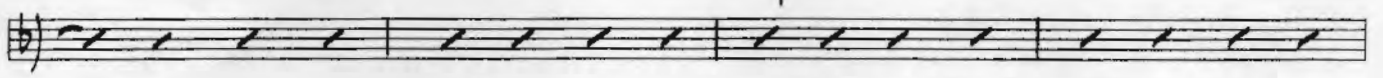
E13(#9) F13(#9)

E13(#9) F13(#9)

B^b13



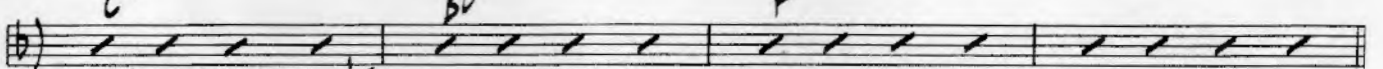
F7



C7

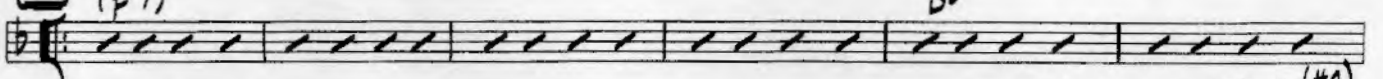
B^b7

F7



105 OPEN: LAST X ON CUE
(F7)

B^b7



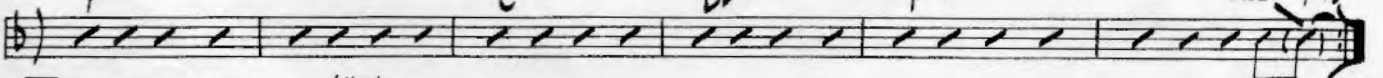
F7

C7

B^b7

F7

LAST X ONLY F13(#9)

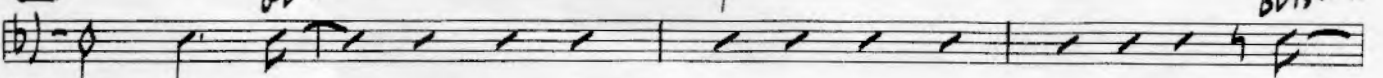


117

G^b13(#9)

F7

B^b13(#9)



B \flat 13(#9) F7 C \flat 7 ALT

B \flat 13(#9) F7

(129) F13(#11) Eb13(#11) F13(#11) Eb13(#11) F13(#11) Eb13(#11) F9(#11)

B \flat 7 (BARI SOLO) F7

C7 B \flat 7 F7 C \flat 7 ALT

(141) F13(#11) Eb13(#11) F13(#11) Eb13(#11) C13(#9) F7(#9) B \flat 13(#9)

G \flat 7(#11) F7(#11)

C7 B \flat 7 F7

(153) OPEN: LAST X ON CUE (F7) B \flat 7

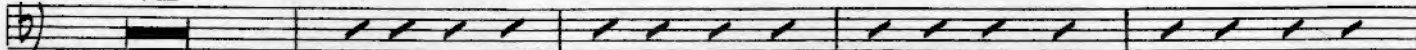
F7 C7 B \flat 7 F7

(165) (F7)

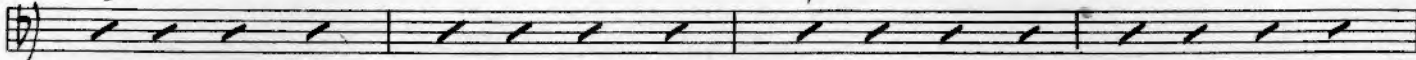
B \flat 7 F7

C7 B \flat 7 F7

(177) 12 (189) F7



Bb7 F7



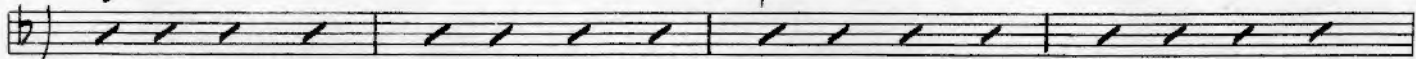
C7 Bb7 F7



(201) (F7)



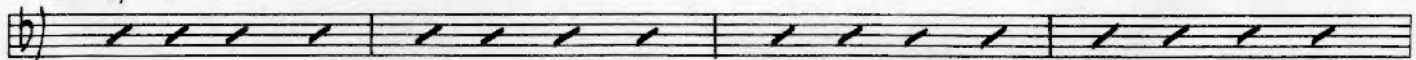
Bb7 F7



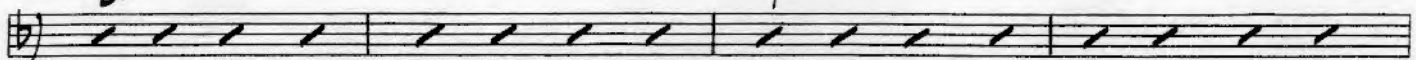
C7 Bb7 F7



(213) (F7)



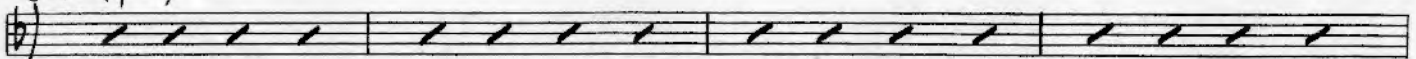
Bb7 F7



C7 Bb7 F7



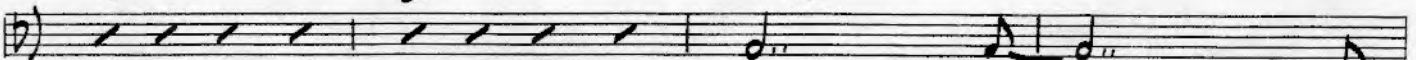
(225) (F7)



Bb7 F7



C7 Bb7 F PED



(BARI SOLO)

(BASS TRB. SOLO)

(DR. FILL)

CONDUCTED F13(#11)

RIT..

ff