

ANY DUDE'LL DO

As recorded by the Bill Holman Band on the "A View From the Side" CD

Piano

Composed and arranged by Bill Holman

Shuffle

$\text{♩} = 136$

5

mf

18

32

A \emptyset 7 D13 9- D \flat 13 9- C13 9- C9- 5+ Fmi7 F \sharp mi7 Gmi7 A \flat mi7

44 OPEN

E \flat 7 A \flat 9 E \flat 7 A7 A \flat 9

f *mf*

D9- E \flat 7 C9- Fmi7 B \flat 7 Gmi7 C7

56 ON CUE (Trbs.)

Fmi7 B \flat 7 E \flat 7 A \flat 9 E \flat 7 A7

A \flat 9 D9- E \flat 7 C9- Fmi7 B \flat 7

68

Gmi7 C7 Fmi7 B \flat 7 E \flat 7 A \flat 9 E \flat 7 A11+9-

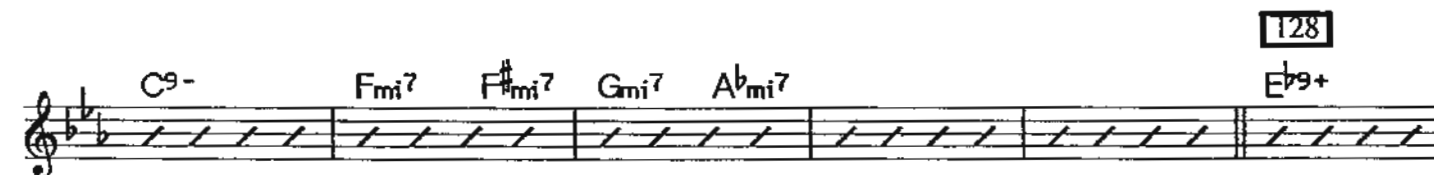
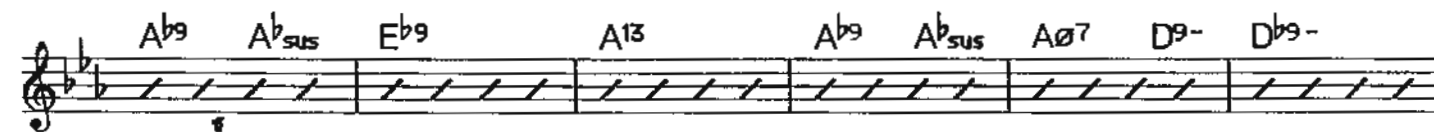
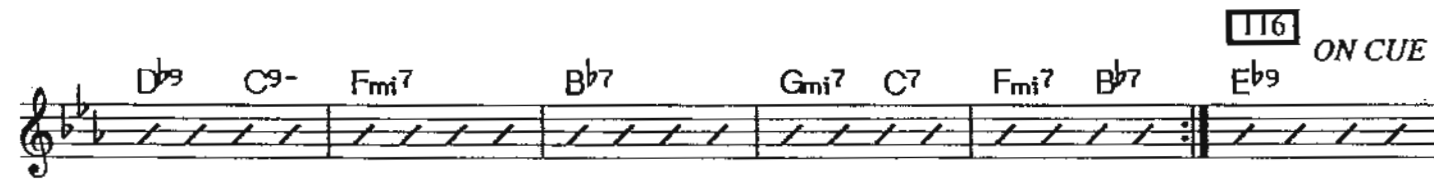
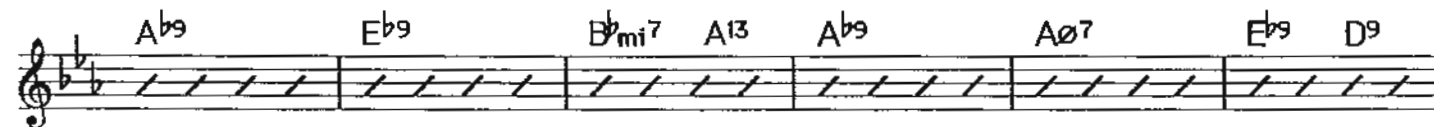
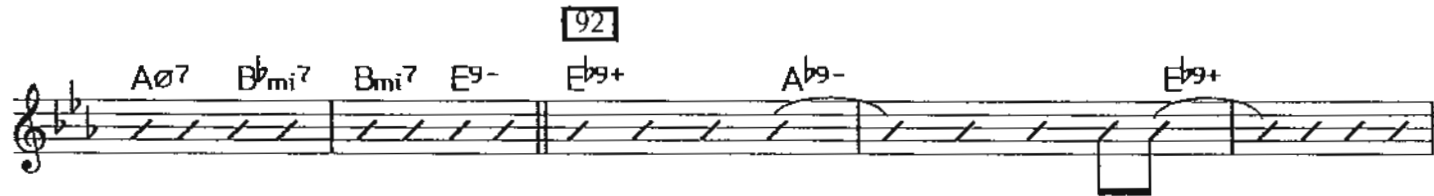
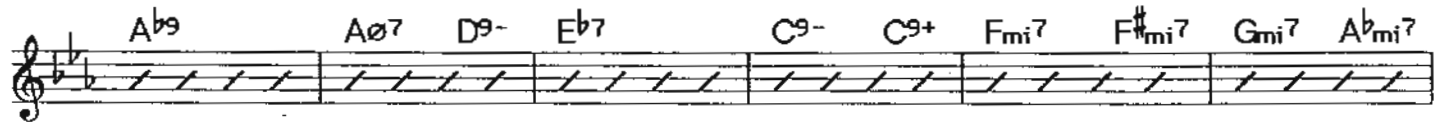
A \flat 9 A \emptyset 7 D9- 5+ D \flat 9 13 C9+5+ Fmi7 F \sharp mi7 Gmi7 A \flat mi7

cresc.

80

A \emptyset 7 B \flat mi7 Bmi7 E9+ E \flat 9+ A \flat 9 E \flat 9+ A9-5-

f



Ab9 Eb9+ Ab9 Aø7 D9-

Db11+ C9- Fmi7 F#mi7 Gmi7 Abmi7 Aø7

142

Bbmi7 Bmi7 E9-5- A

Fill Ao Eb7 Gmi7 Fmi7 F#mi7

Gmi7 Abmi7 2

160

Abmi7/Db Eb7 Ab9 Eb9

Bbmi7 Eb9+5+ Ab11+ Gb11+ Eb11+ D9+ Db9+ D9- Eb9+ D9+ C9+ B9+

ff

Ab9+ A9+ G9+ Fmi7 F#mi7 Gmi7 Ami7 Abmi7 Abmi7

Any Dude'll Do - Piano

[172]

E^b9A^b9E^b9A^b9*mf*

[176]

E^b9A^b9E^b9A^b9A^o7D⁹⁻D^b9C⁹⁺F^{mi}7F^{#mi}7G^{mi}7A^{bmi}7A^o7*ff*E^{bmi}7B^{mi}7

F13 9-

E^b9-A^b9+G^b9-

E9

E^b9+11+

◡